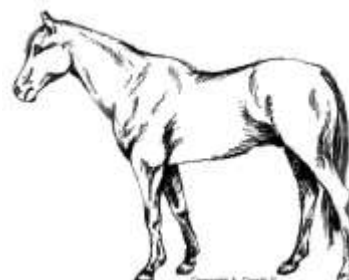




Arthropod-borne diseases: spreading of pathogens transmitted by hematophagous arthropods of human and veterinary concern



Valentina Ebani DVM, PhD
Dipartimento di Scienze Veterinarie



AGENTI EZIOLOGICI BATTERICI

Ehrlichia canis



Dog 16.18% (2013-2017)

7.07% (2008-2012)

Cat 6.42% (2005-2011)

Fox (*Vulpes vulpes*) 44.44%
(2014-2016)

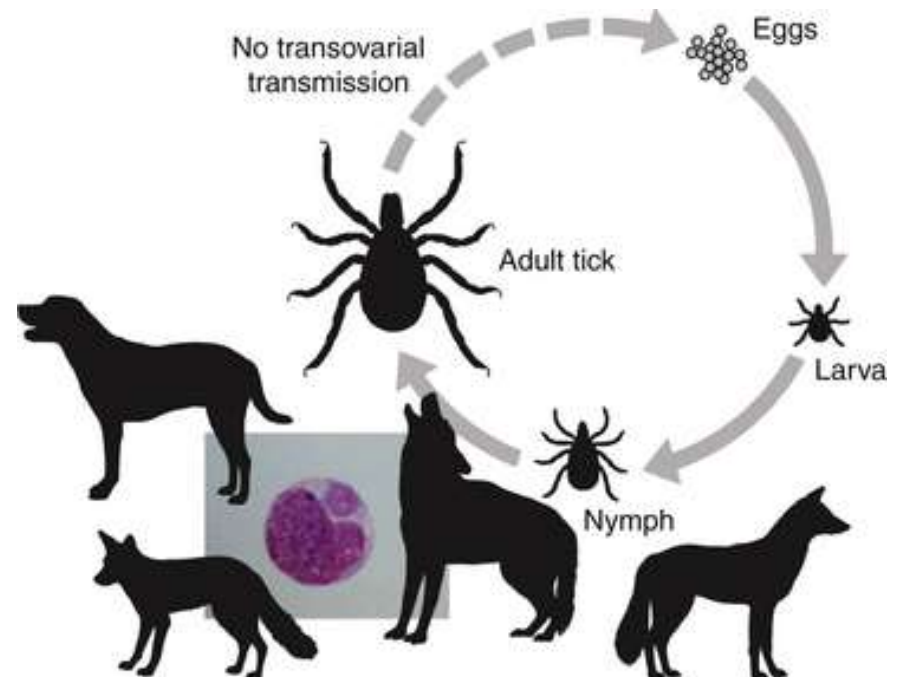
Anaplasma phagocytophilum

Borrelia burgdorferi s.l.

Coxiella burnetii

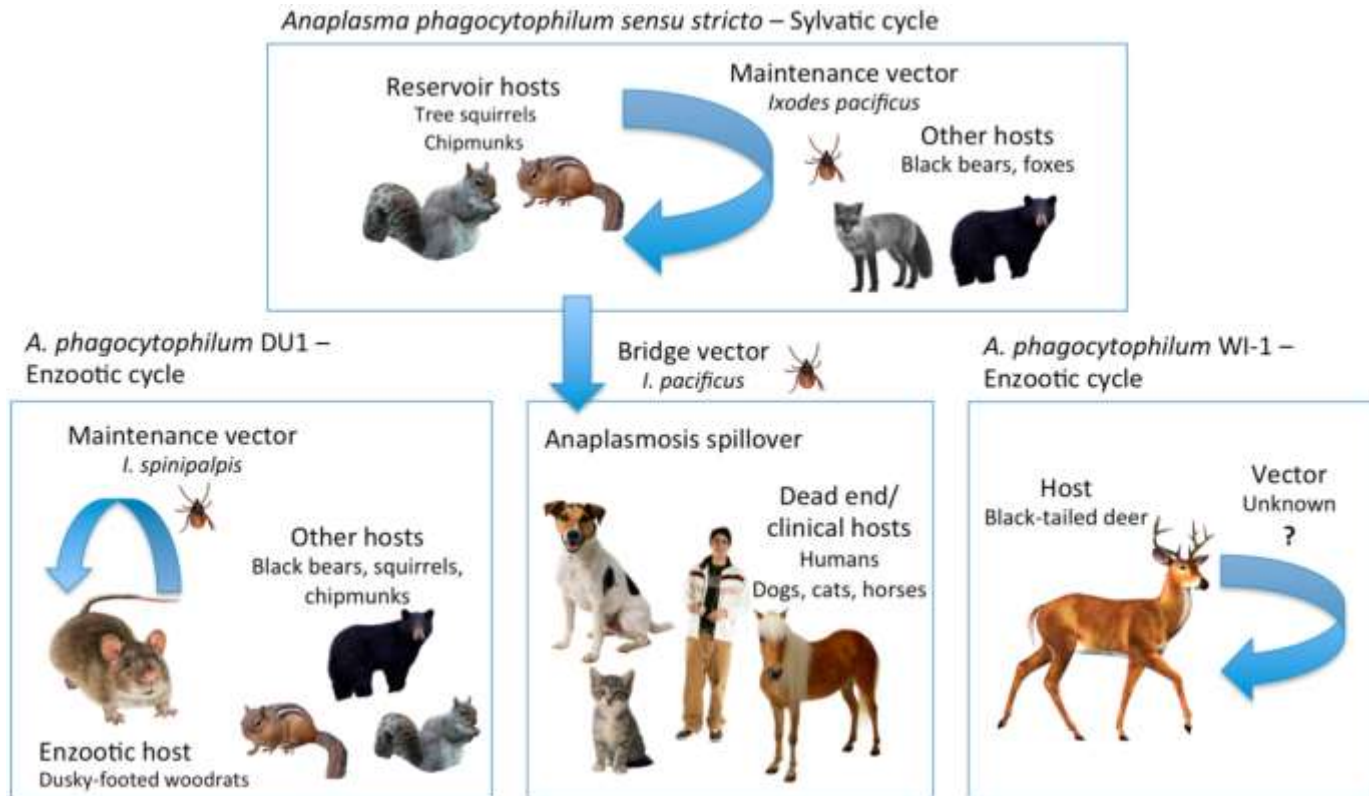
Rickettsia

Bartonella



Anaplasma phagocytophilum

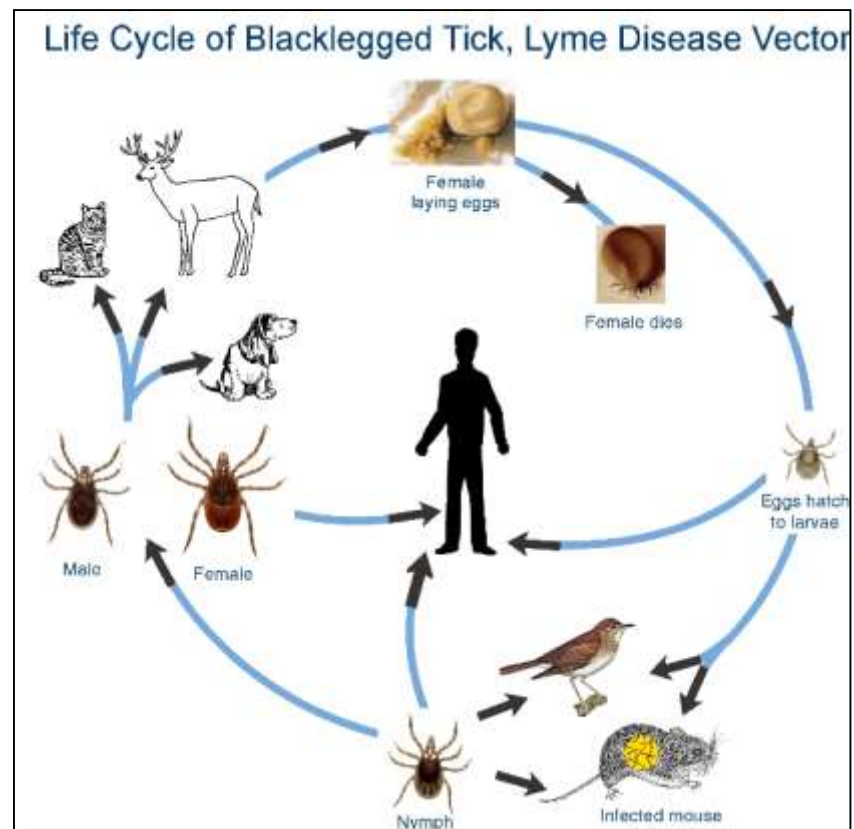
Roe deer (<i>Dama dama</i>)	72.41%	(2004-05)
Red deer (<i>Cervus elaphus</i>)	40%	(2014-15)
Wild boars (<i>Sus scrofa</i>)	1%	(2013-14)
Red foxes (<i>Vulpes vulpes</i>)	16.6% - 0.65%	(2009-10 - 2014-16)
Horses	25.62%	(2014-15)
Hunting dogs	2.5%	(2012-13)



Borrelia burgdorferi

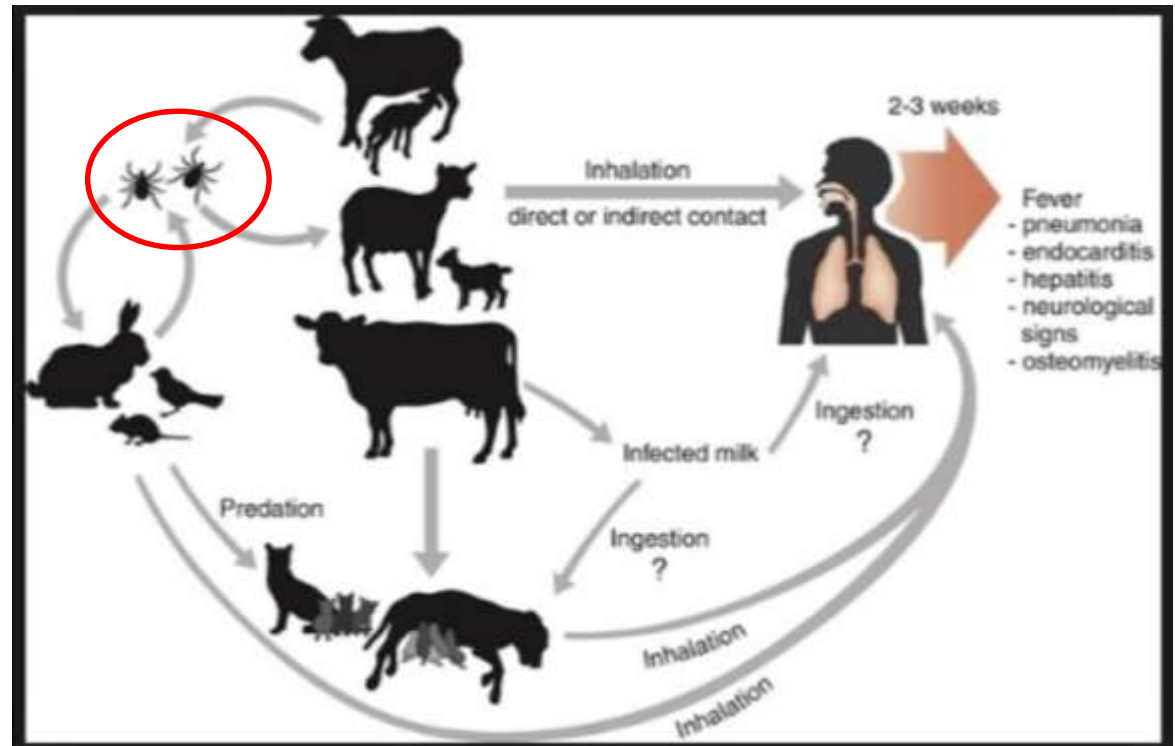
Wild boars (<i>Sus scrofa</i>)	3%	(2013-14)
Red deer (<i>C. elaphus</i>)	3.33%	(2014-15)
Horses	3.12%	(2014-15)
Pigeons	15.47%	(2011-13)
TICKS	6.49%	(2013-14)

Hares (<i>Lepus europaeus</i>)	5.8%	(2011-15)
Horses	24.3%	(2007-09)



Coxiella burnetii

Hunting dogs	5.1%	(2012-13)
Horses	2.5%	(2014-15)
Red deer (<i>Cervus elaphus</i>)	10%	(2014-15)
Red foxes (<i>Vulpes vulpes</i>)	1.96%	(2014-16)
Pigeons	5.95%	(2011-13)
Waterfowl	3%	(2016-17)



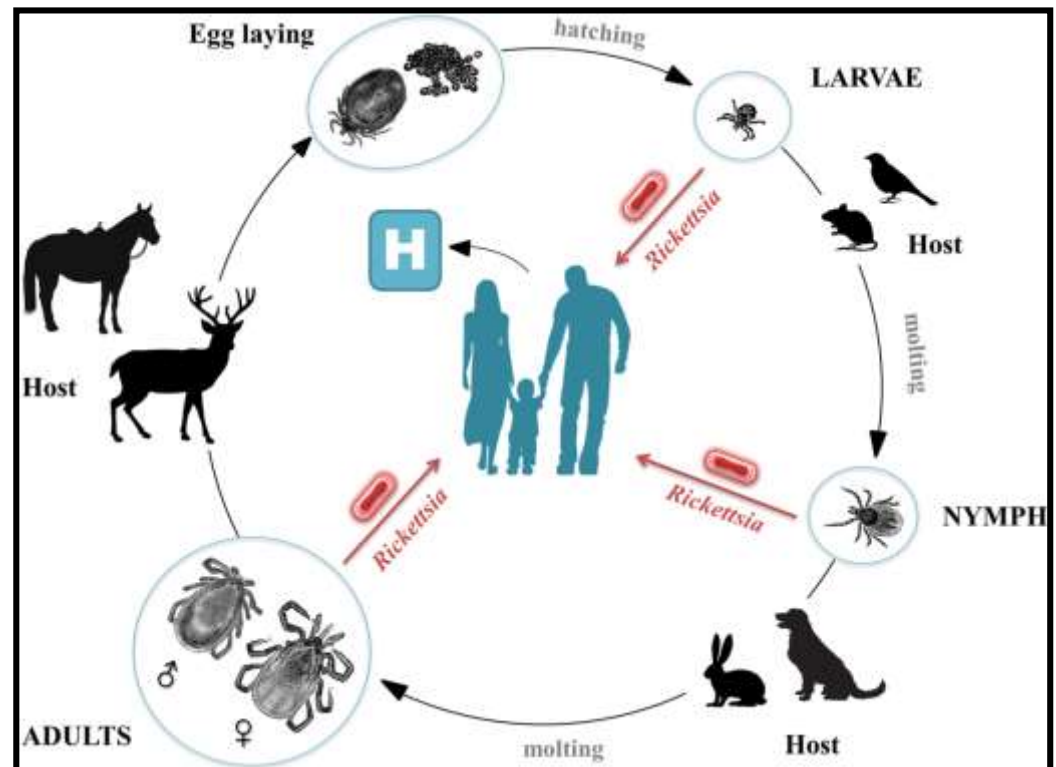
Rickettsia spp.

Rickettsie dello SPOTTED FEVER GROUP



Rickettsia conorii → Mediterranean Spotted Fever

Dogs	23.87%	(2003-12)
Horses	15.03%	(2013-18)
Pigeons	5.95%	(2011-13)
TICKS	20.78%	(2013-14)



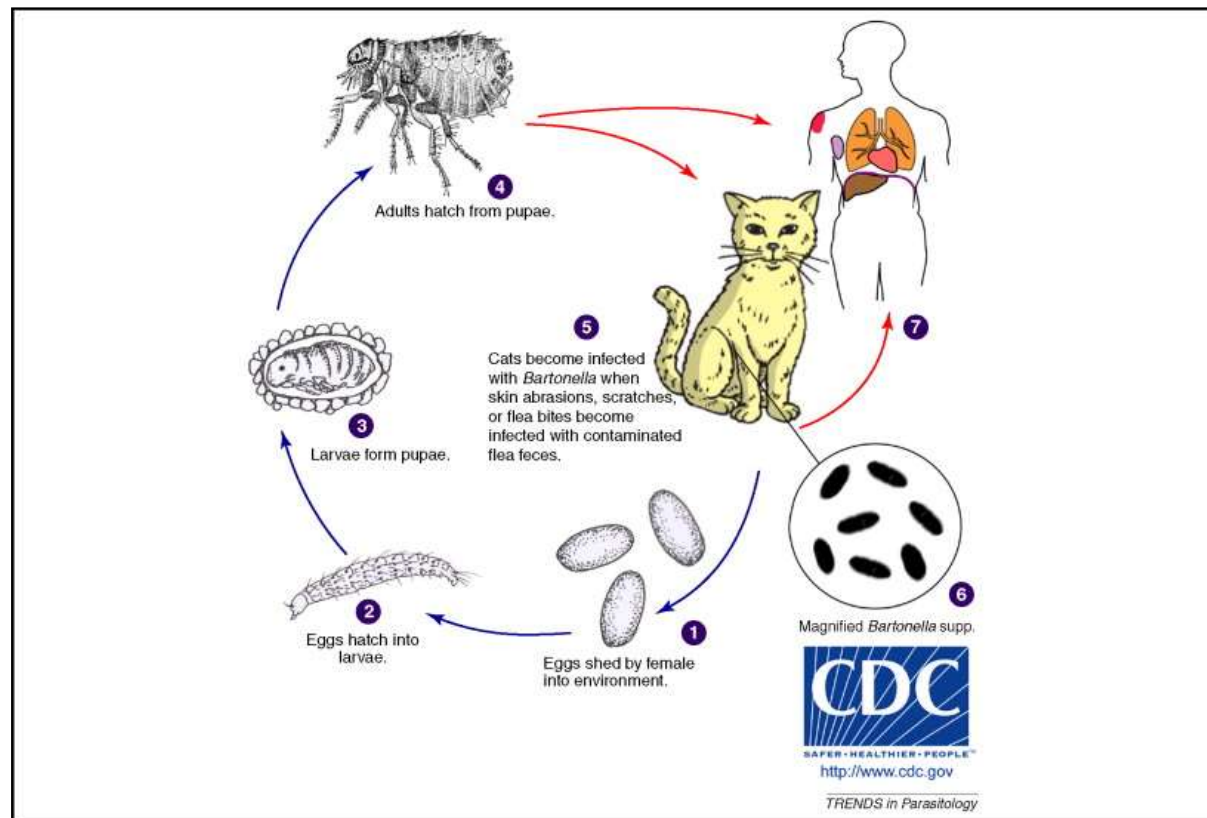
Bartonella henselae

Bartonella henselae CAT 33.3% (IFI) 11.1% (PCR)

Bartonella spp. Hunting dogs 20.5% (2012-13)
 Pigeons 2.38% (2011-13)
 TICKS 37.66% (2013-14)



B. henselae in donkeys (2016)



Seasonality, distribution and prevalence
of arthropod-borne diseases are influenced by

CLIMATE FACTORS

that may affect disease outbreaks by altering
biological variables such as vector population
size and density and vector survival

